

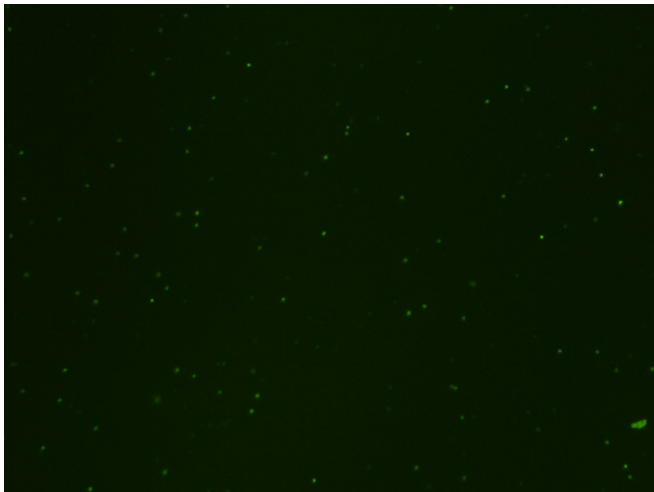
Assay: Immune cells, low RBC

Sample ID: 201700049-mf-1006171615\_001\_20171006\_231827-2

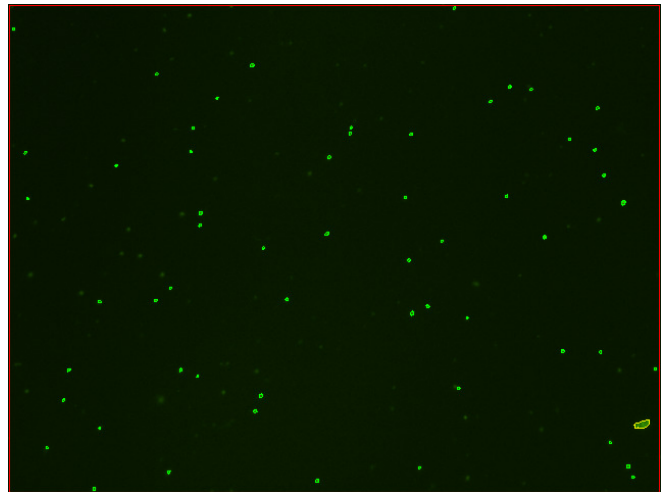
Dilution Factor: 10.00

Count	Concentration	Mean Diameter
=====	=====	=====
Total: 364 cells	$6.27 \times 10^6$ cells/mL	5.8 microns
Live: 207 cells	$3.57 \times 10^6$ cells/mL	5.9 microns
Dead: 157 cells	$2.71 \times 10^6$ cells/mL	5.7 microns

Viability: 56.9%



Original Images



Counted Images

